

JUL 22 2005

Index No. J-21

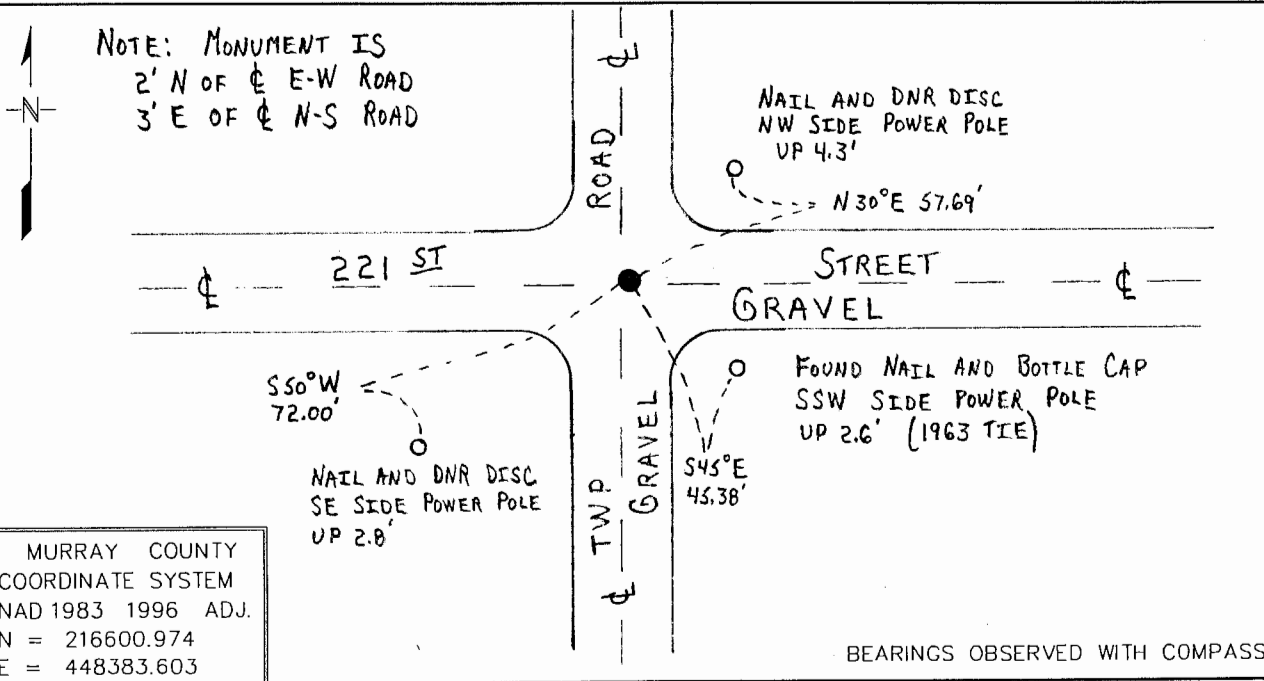
# CERTIFICATE OF LOCATION OF GOVERNMENT CORNER

NORTHEAST Corner of Section 14, Township 108 N, Range 43 W

5th Principal Meridian, State of Minnesota, County of MURRAY

At the corner location shown on the sketch:

- On 9/30/03 found a 6 INCH DIAMETER CONCRETE CYLINDER WITH "+" ON TOP,  
DATE DOWN 1.0'
- left monument as found,  lowered monument,  removed monument (explain)
- On 9/30/03 Placed a 3/4" BY 24" REBAR ON THE SOUTH EDGE OF THE  
DATE FOUND CONCRETE CYLINDER, DOWN 1.0'



Statement of evidence for this corner location is on back of this page. WMA00165.00.00.01

I certify that this document was researched and prepared by me or under my direct supervision.

SIGNATURE Bruce W. Sheppard DATE 7-19-05 License Number 17003

Title:  Land Surveyor  Professional Engineer  County Surveyor  County Engineer

The DNR Division of Lands and Minerals contacted the following for survey information:

Minnesota Secretary of State's Office  
Murray County Recorder's Office  
Murray County Highway Engineer's Office  
Madsen Land Surveying, Inc. of Fairmont

- 1866 U.S. General Land Office notes, obtained from the Secretary of State's Office, show the corner marked with a post in a mound.
- 1902 July1, Surveyor's Record Book A, Page 175, obtained from the County Recorder's Office, contains a survey in Section 13 by JW Woolstencroft. Survey shows corner but a description of what kind of monument was found or set is not given. The corner is shown:  
2653 feet from the west quarter corner of Section 13
- 1902 July1, a Surveyor's Record Book, containing ties to government corners, obtained from the County Highway Engineer's Office, shows the same information as Surveyor's Record Book A, Page 175.
- No Date A Surveyor's Record Book containing ties to government corners, obtained from the County Highway Engineer's Office, shows a concrete stone at corner, but does not indicate if it was found or set, with the following ties:  
reference point, tack in corner fence post, southeast, 46.8 feet  
reference point, tack in corner fence post, southwest, 52.0 feet
- 1957 January, a page in a DNR field notebook, lists the following ties to corner:  
corner fence post, southeast, 46.8 feet  
corner fence post, southwest, 44.0 feet  
corner fence post, northwest, 46.3 feet  
A description of what kind of monument was found or set at corner is not given. The corner was found to be:  
2667.5 feet from the north quarter corner of Section 14  
2640.0 feet from the east quarter corner of Section 11  
5291.5 feet from the northeast corner of Section 11
- 1957 June, a page in a DNR field notebook, shows that corner was used for a survey in the West Half of Section 12, but a description of what kind of monument was found or set is not given. The corner is shown:  
at the intersection of the center line of roads north, south, east and west
- 1958 January, a page in a DNR field notebook, shows that corner was used for a survey in the Northwest Quarter of Section 13, but a description of what kind of monument was found or set is not given. The corner is shown:  
at the intersection of the center line of roads north, south, east and west
- 1963 September, a page in a DNR field notebook, shows that a redhead spike was found at corner. The redhead spike was replaced with a railroad spike and the following ties were taken:  
at the intersection of the center line of roads north, south, east and west  
nail and bottle cap, southwest side, power pole, southeast, 46.1 feet  
nail and bottle cap, northwest side, power pole, southwest, 79.40 feet

- 1965 October, a page in a DNR field notebook, shows that a railroad spike was found at corner.
- 1966 September, a page in a DNR field notebook, states that a railroad spike was found at corner per previous DNR survey.
- No Date A Surveyor's Record Book containing ties to government corners, obtained from the County Highway Engineer's Office, shows a railroad spike at corner, but does not indicate if it was found or set, with the following ties:  
reference point, nail and cap in power pole, southwest, 79.42 feet  
reference point, nail and cap in power pole, southeast, 46.35 feet
- 2003 September 30, the DNR Division of Lands and Minerals dug with a backhoe and found a 6 inch diameter concrete cylinder with a "+" on top at corner, 1.0 feet below the surface. Searched for and found one record tie as shown on the sketch of reference ties. The concrete cylinder was found to be:  
3.0 feet east of the centerline of a north-south road  
2.0 feet north of the centerline of an east-west road  
2670.20 feet from the north quarter corner of Section 14  
2639.51 feet from the east quarter corner of Section 11  
5288.89 feet from the northeast corner of Section 11

Analysis of the above information led the DNR Division of Lands and Minerals to conclude that the found concrete cylinder marks the location of the corner. A  $\frac{3}{4}$  inch by 24 inch rebar was set on the south edge of the concrete cylinder and flush with its top.